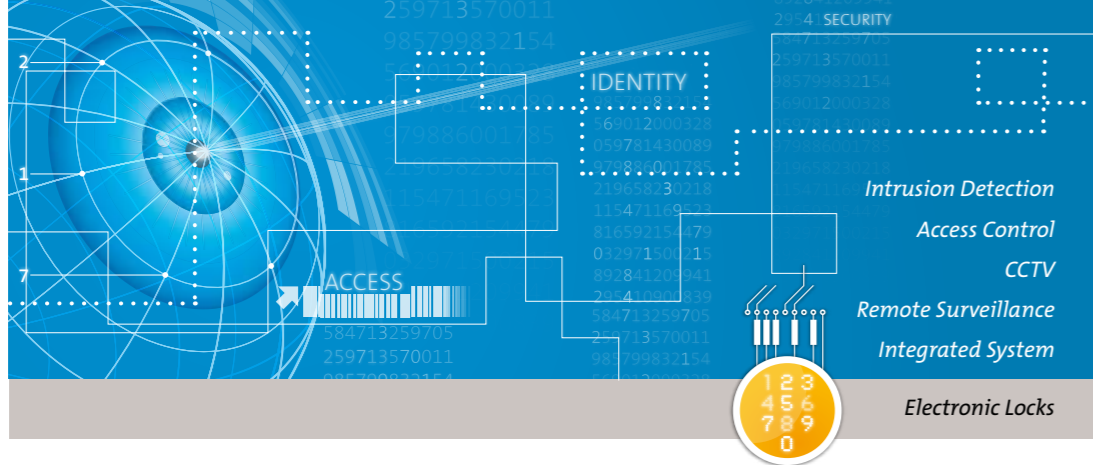


GSL 1000



GSL 1000 for added value

Simplicity and Clarity

A large, clear display with common-sense icons makes operation quick and self-explanatory for any user. Keypad and display are illuminated.

Reliable Technology

Motor-driven lock bolt with standard measurements for easy retrofit and durable components for longevity.

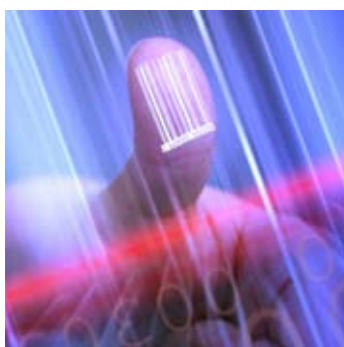
Extreme Versatility

As your needs change, so can the lock. A stand-alone lock can easily be integrated into your security system or become part of a wider network of locks. Control can also be scaled up and centralised through remote, online management.



Biometrics

The standard level of security can be enhanced with the addition of a fingerprint reader.



Efficient Data Access

The lock is equipped with a USB interface that can be used to download the audit trail or even to upload changes to the lock configuration.



Innovative One-Time Code Management

Unique to GSL 1000, mobile technology can be used for OTC distribution and access management.

Powerful Software

A choice of software solutions ensures that lock management is kept efficient and simple.



Certified Security

GSL 1000 is independently tested and approved by ECB-S, VdS and A2P to guarantee a high level of security.

ECB-S and A2P: Grade B and C
VdS: Class II and III



Competence Centre Electronic Security
Gunnebo Electronic Security
Member of the Gunnebo security group
23, route de Schwobsheim
B.P. 40285 Baldenheim
67606 Sélestat Cedex, France

Visiting address:
15-17 avenue Morane Saulnier
78140 Vélizy-Villacoublay, France
Tel: +33 810 000 800
Fax: +33 1 34 65 41 39
www.gunnebo.com



06/2009 — Design and production: Gunnebo Electronic Security — Photos Credits: Gunnebo Electronic Security and Fotolia.
In the interests of its customers, Gunnebo Electronic Security reserves the right to modify the models described — This document is not contractually binding.



GSL 1000

High Security Electronic Lock for safes, vaults and doors



GSL 1000



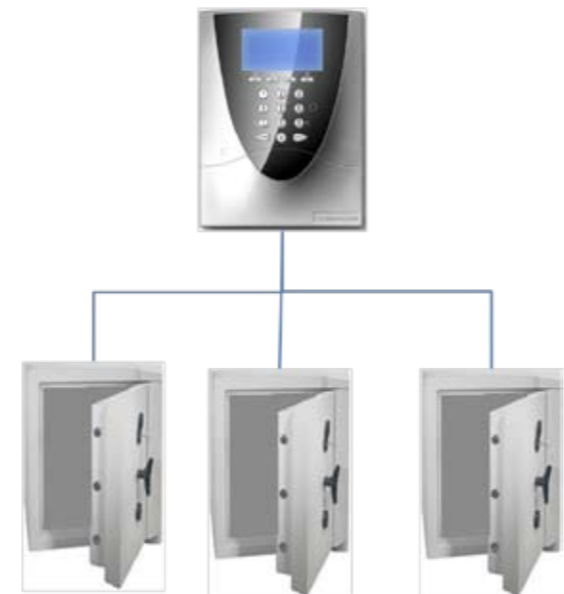
GSL 1000...

GSL 1000 is an incredibly flexible, high-security electronic lock which can be used as a stand-alone unit, as a lock using one-time codes or as part of a network.

This innovative range is designed to offer just the right solution to suit your particular requirements – be it as a retailer who needs to accommodate multiple lock users with the minimum of fuss, as a CIT company in need of easy code management and route planning, or as a bank which has to have control over a network of electronic locks.

Typical Users

- Retailers
- Offices, Service Staff
- Banks and Financial Institutions, Cash Centres and CIT Companies
- Defence Departments



Fully Integrated Network

As needs change, locks currently used as stand-alone units can be connected to become network locks – testament to GSL 1000's flexibility and scalability.

Up to 16 locks can be connected and controlled from a single terminal and integrated with existing security infrastructures, such as surveillance, alarm and entrance control systems. All communication to, from and within the network is secured by encrypted data transfer.



- Up to 16 locks controlled from one unique terminal
- Advanced alarm interface
- Encrypted data communication



More Efficient Cash Handling Reduces Costs

As well as fixed code entry, one-time codes can also be used together with GSL 1000, ideal for CIT and service staff.

One-time codes, or OTCs, increase the level of security where it is necessary for a series of external individuals to have access to an ATM or cash recycler, either for emptying and filling purposes, or to service the machine. OTCs also make it convenient for authorised staff to make unscheduled or emergency openings.

Together with GSL 1000's web-based software solution, authorised users have access to the system from any online terminal. The software is used not only for the generation of OTCs and remote lock management, but also for the planning and administration of CIT and service routes. This helps optimise cash-handling procedures and reduce the cost of emptying or servicing self-service banking machines.



- OTC code generation
- Route planning of CIT staff
- Parallel operations of fixed and one OTC



Simple and Flexible

Where many employees must have access to the contents of a safe, GSL 1000 provides simplicity and flexibility.

Its intuitive design and clear display make it easy for any employee to use. Clear instructions and an extensive on-screen guide eliminate the need for prior technical experience or lengthy training.

A single GSL 1000 lock can accommodate over 50 users. Employees can quickly be added and removed as users by a manager – particularly important where there is a high turnover of staff.

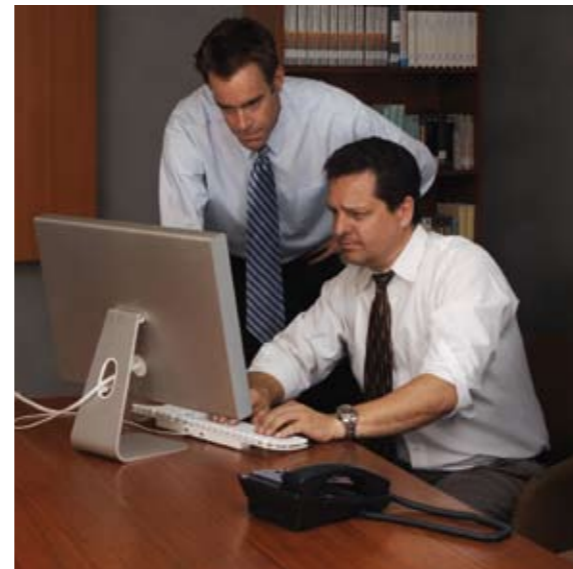
Managers can also set time periods during which the lock may or may not be used. This flexibility is necessary where adjustments have to be made for holidays, shifts and varying store opening times. It is common practice, for example, to block use of the lock during the night, when a store or office is almost empty.

All customisation and user management is carried out at the lock itself or using supporting software. Either way, administration is kept to a minimum.

As a stand-alone unit, GSL 1000 operates independently of any network.



- User-friendly operations
- Up to 50 users
- Time delay
- Time windows functions
- Advanced calendar included automatic daylight saving



Remote Management – Convenient and Time-Saving

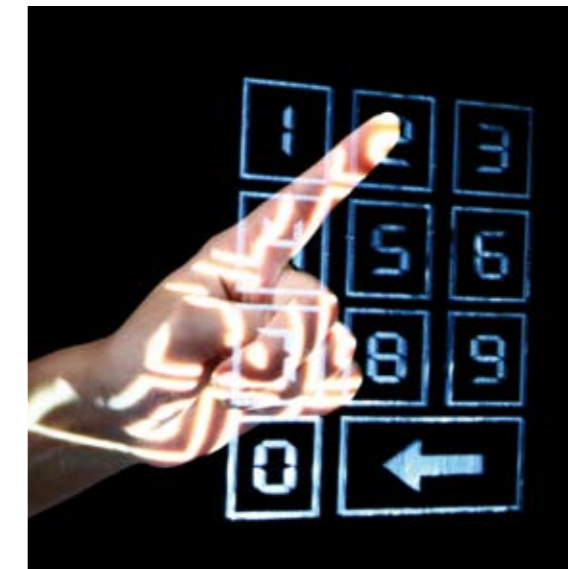
GSL 1000's powerful management software gives security managers better control over their entire fleet of locks, no matter where the location.

Setting user rights and lock parameters can be carried out remotely, as well as accessing the audit trail of any lock within the network. Configuration is quick and simple and once applied to one lock, can easily be applied to other locks to save time. Security policies can be updated instantly across an entire network, with no need for a physical presence at the lock itself.

Security managers can also check lock status – in real time – which means technical issues are rapidly recognised and rectified, vastly improving response times. Reports can also be generated showing individual lock performance and events history.



- Windows based configuration software
- Easy central fleet management and overview
- Performance and service record



How do one-time codes (OTCs) work?

OTCs are unique codes which can only be used by one person at one lock during a pre-determined window of time.

When a CIT employee or a service technician wishes to open a cash machine or safe, they enter a personal ID code into the GSL 1000 which starts the opening procedure. Then the OTC is entered. Critically, the OTC is only valid for use at that lock at that time by a person using the correct ID.

OTCs can be distributed to service staff or CIT personnel in a number of ways, including via mobile browser or via the phone using a voice-recognition system.

Uniquely for the GSL 1000 platform, a user can simply log in via a mobile phone browser and then request and receive the valid OTC on the screen.

The solution can also be integrated with a voice recognition systems (IVR). The user calls in and is identified, and served with an OTC by the IVR.

For added security and intervention monitoring, GSL 1000 can be instructed to generate a closing code which must be sent back to the operations centre to confirm that the safe has been shut.



- Mobile browser
- Voice-recognition

... flexibility, versatility and scalability