



**KABA**<sup>®</sup>

# Safe Lock SL 525

Top-of-the-Line Quality and Functionality

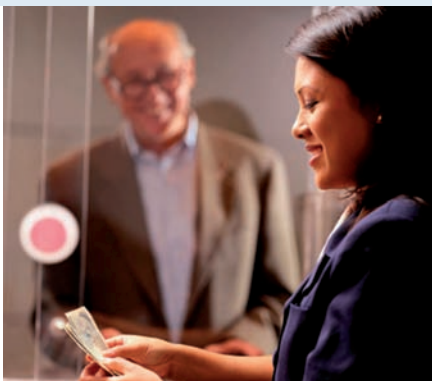
# Secure and reliable in all fields

The SL 525 safe lock is specially designed for use in mid- to high-level security applications – banks, postal services, supermarket chains, businesses and shops, including jewellery stores, bureaux de change, fast food restaurants, hotels and domestic areas – Wherever time lock functions, multiple user access, flexibility of use and a high level of control and traceability are required.

The standard lock footprint makes it suitable to replace traditional mechanical safe and time locks. The lock can be specifically configured, with the keypad or the computer based software, for each individual user requirements. This unique flexibility offered by the lock, combined with simple installation and self-explanatory operation, enables the lock to be utilised in a variety of applications.

- Banks
- Postal services
- Supermarket chains
- Business and shop safes
- Automated teller machines
- Hotels
- Domestic

## Bank & postal service



«As the Security Officer of a major bank with several hundred branches, I want to rely only on safe locks which are certified by independent security institutions.»

«We can't afford weak links in the security chain. Of course quality and reliability, procurement and maintenance costs together with integration and flexibility play a considerable role in the decision.»

Secure and reliable

## Supermarket chain



«We have to do everything really fast. Customers don't want to hang around and that's why they come to us. I haven't got time to bother about complicated technology.»

«Enter the code, the safe opens, put the takings in the safe, close the door and the safe is closed. It's as simple as that.»

«And, in the case of irregularities, no one is suspected without justification. Everyone has his or her own code. The boss always knows who has done what with the safe and when.»

Quick and customer friendly

## Business and shop safe



«Discretion and reliability are very important. For me, it is important that my security facilities are reliable and are easy to operate.»

«Besides the elegant design of the keypad, one other important aspect for me, of course, is personal security: I can call for help at any time, automatically switch on the surveillance camera or block the safe for a short or longer period with a special code.»

Discreet and elegant

# All-in-One



**Motor bolt & auto-locking**

**Ease of operation simple & secure**

**Multi-language display & symbols**

The motorised bolt lock provides for maximum reliability and flexibility in mounting. The design provides for maximum security against shock, electrostatic and electromagnetic force.

No spindle is required to connect the input unit and the motorized bolt lock. The lock is optimally protected from (external) forced opening, since its position can not be determined from the outside.

- Maximum fastening strength
- Unlimited mounting positions
- No spindle
- Standard footprint

The ergonomic keypad with distinct markings eases the daily routine of code entry and helps the security officer in making quick changes to access authorization.

The information key can be used to call up battery status or the opening counter. The arrow keys can be used to quickly and easily navigate to the required function. Easy external battery replacement.

- Ergonomic keypad
- Clear input response in display
- High quality keys
- Easy battery replacement
- Multi-level security monitoring

Thanks to the menu display response in predefined languages and clear symbols, the operation is self-explanatory. This reduces errors and improves efficiency and reliability, even with frequent user changes.

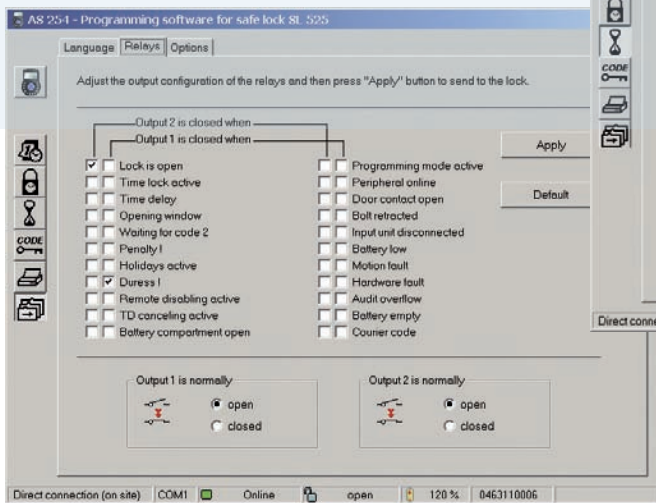
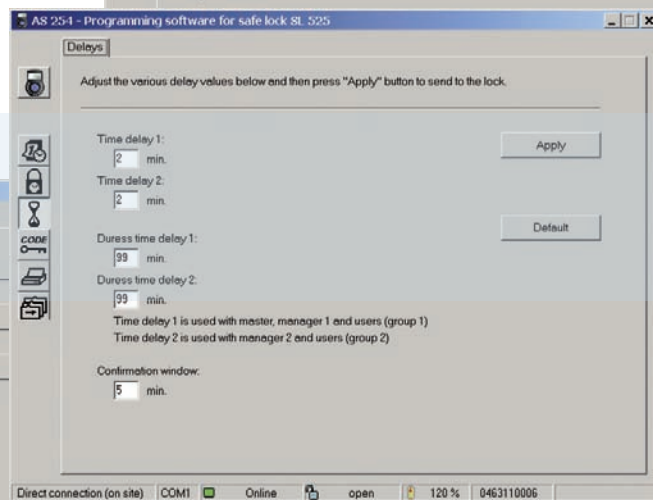
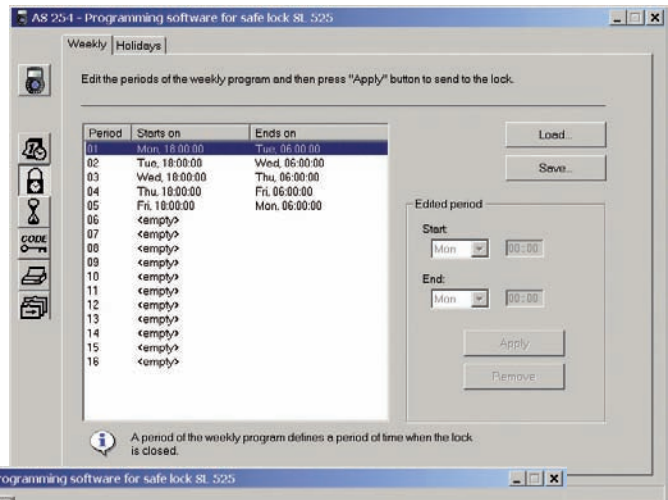
There are no ambiguous beeps and blinking LEDs. The large high contrast LCD display provides clear, unambiguous information on the lock status, which eases operation and cuts down on down time.

- Choice of various display languages
- Large, readable LCD display
- Both text and symbol information

# Security and flexibility

With the user-friendly, multi-language programming software, the lock is adapted to your individual security requirements. Data is easily stored and transferred with a click to other locks

The lock includes five programmable terminals with a choice of selectable criteria. You do not require additional modules and there is no further installation work required – The SL 525 packet includes everything. Your investment is secure and flexible today and in the future.

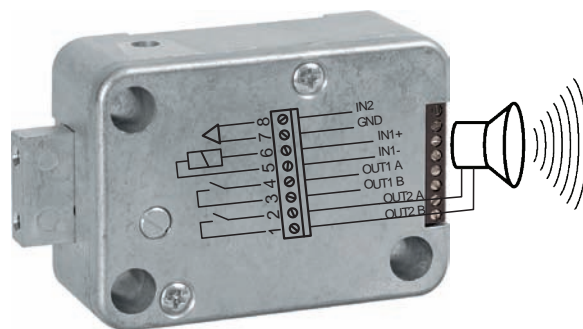


## Security and flexibility

- 22 user codes
- Multi-level code hierarchy
- User groups
- Dual mode
- 16 weekly time lock periods
- Remote disabling
- Multiple alarm activation
- Time delays
- 2400 events log
- 3 input and 2 output terminals

## Connection example

Integrated terminals enable easy connection to an alarm or remote monitoring system. All-in-one.



# Overview

## High security lock

- + Motor lock with automatic locking
- + Adaptable bolt mechanism: dead bolt/ spring bolt\*
- + Fast retrofitting, thanks to standard dimensions
- + Remote connections integrated in lock unit. For e.g. for alarm or remote monitoring systems etc.
- + High-quality, rugged metal input unit in an elegant design
- + Large, easy to read LCD display
- + Long battery service life
- + Battery compartment accessible from the outside
- + Choice of various display languages
- + Non-resettable opening counter
- + Adjustable beeper volume\*\*
- + Large and detailed audit trail
- + Approvals: EN 1300 B, ECB-S, VdS class 2, IMP class B, CNPP a2p level B/E, UL type 1

## Code lock

- + Four hierarchy levels: Master, Manager, User and Courier
- + Dual mode
- + Code denial
- + Penalty time on multiple wrong code entries
- + Duress code entry can be enabled/ disabled
- + Selectable code format (ID+PIN or PIN+ID).\*\*

## Time lock

- + Real time clock with weekday and leap year recognition
- + Selectable time format (AM/PM or 24 hours)
- + Weekly time lock programmes
- + Immediate locking (until end of next weekly locking period)
- + Holiday periods
- + Annual, recurring time lock periods
- + Automatic summer/ winter time\*\*

## Time delay

- + Opening delays with confirmation window per code group
- + Duress opening delays with confirmation window per code group\*\*
- + Digital input to bypass opening delays

## Control inputs

- + Door contact
- + Delay bypass
- + Remote disabling
- + Controlled disabling\*\*
- + Duress by omission\*\*

## Digital outputs

- + Duress alarm
- + Lock open
- + Invertible output polarity\*\*
- + Additional outputs individually programmable\*\*

\* Not VdS certified

\*\* With programming software



## SL 523

Model SL 523 is available, for use where no configuration with the programming software is necessary. The same quality and security, however with limited time and programmable functions.



**Kaba AG**  
Mühlebühlstrasse 23  
P.O. Box  
CH-8620 Wetzikon  
Tel. +41 44 931 61 11  
Fax +41 44 931 64 84

[www.kaba.ch](http://www.kaba.ch)

**Kaba Mauer GmbH**  
Frankenstrasse 8-12  
DE-42579 Heiligenhaus  
Tel. +49 2056 596 0  
Fax +49 2056 596 139

[www.kaba-mauer.de](http://www.kaba-mauer.de)

**Kaba S.A.S**  
9 - 11, rue Pagès  
FR-92150 Suresnes  
Tel. +33 1 41 38 98 60  
Fax +33 1 41 38 01 06

[www.kaba-france.com](http://www.kaba-france.com)

**Kaba (UK) Ltd.**  
Lower Moor Way  
Tiverton  
Devon EX16 6SS  
Tel. +44 1884 256 464  
Fax +44 1884 234 415

[www.kaba.co.uk](http://www.kaba.co.uk)

**Iberkaba S.A.**  
María Tubau 4-1ª  
ES-28050 Madrid  
Tel. +34 90 222 41 11  
Fax +34 91 736 24 30

[www.kaba.es](http://www.kaba.es)

**Kaba Elzett ZRt.**  
Megyeri Út 51.  
P.O. Box 198  
HU-1044 Budapest  
Tel. +36 1 350 10 11  
Fax +36 1 329 06 92

[www.kaba-elzett.hu](http://www.kaba-elzett.hu)

**Kaba Ltd. Middle East**  
Dubai Internet City  
Bldg. # 16, Office 237  
P.O.Box 500624  
Dubai  
United Arab Emirates  
Tel. +971 4 367 04 46  
Fax +971 4 367 80 93

**Kaba Security Pte Ltd.**  
Block 203A, Henderson Road  
#07-03, Henderson Industrial Park  
SG-159546 Singapore  
Tel. +65 6275 12 11  
Fax +65 6275 12 33

[www.kaba.com.sg](http://www.kaba.com.sg)

**Nihon Kaba K.K.**  
German Industry Center  
1-18-2 Hakusan, Midori-ku  
JP-Yokohama 226-0006  
Tel. +81 45 931 89 00  
Fax +81 45 931 91 00

[www.kaba.co.jp](http://www.kaba.co.jp)

**Kaba Australia Pty Ltd.**  
Unit 4, 42-44 Redfern Street  
AU-Wetherill Park NSW 2164  
Tel. +61 2 8787 47 77  
Fax +61 2 9609 66 10

[www.kabaaustralia.com](http://www.kabaaustralia.com)

**Kaba Mas Corp.**  
749 W. Short Street  
US-Lexington, KY 40508  
Tel. +1 859 253 47 44  
Fax +1 859 255 26 55

[www.kaba-mas.com](http://www.kaba-mas.com)

**Corporación Cerrajera Alba S.A. de C.V.**  
Circ. G. Baz No. 16, Col. México  
Nuevo, Atizapan de Zaragoza  
MX-52966 Edo. de México  
Tel. +52 55 5366 72 00  
Fax +52 55 5366 72 91

**Kaba do Brasil Ltda**  
R: Eng. Jorge Oliva, 111  
BR-São Paulo, SP 04362-060  
Tel. +55 11 5670 71 75  
Fax +55 11 5670 71 76

[www.kabadobrasil.com.br](http://www.kabadobrasil.com.br)