



Axessor® Safe Lock

Modular – Flexible – Networked

Kaba AG
Mühlebühlstrasse 23
CH-8620 Wetzikon
P.O. Box
Phone +41 44 931 61 11
Fax +41 44 931 64 84
www.kaba.com/safe-locks

Kaba Mauer GmbH
Frankenstrasse 8-12
DE-42579 Heiligenhaus
Phone +49 2056 596 0
Fax +49 2056 596 139
www.kaba-mauer.de

Kaba Mas Corp.
749 W. Short Street
US-Lexington, KY 40508
Phone +1 859 253 4744
Fax +1 859 253 0310
www.kaba-mas.com

Kaba (UK) Ltd.
Lower Moor Way
Tiverton
Devon EX16 6SS
Phone +44 1884 256 464
Fax +44 1884 234 415
www.kaba.co.uk

Iberkaba S.A.
María Tubau 4-1ª
ES-28050 Madrid
Phone +34 90 222 41 11
Fax +34 91 736 24 30
www.kaba.es

Kaba Elzett ZRt.
Megyeri Út 51
P.O. Box 198
HU-1044 Budapest
Phone +36 1 350 10 11
Fax +36 1 329 06 92
www.kaba-elzett.hu

Kaba Ltd. Middle East
Dubai Internet City
Bldg. # 16, Office 237
P.O. Box 500624
Dubai, United Arab Emirates
Phone +971 4 367 04 46
Fax +971 4 367 80 93

Kaba Security Pte Ltd.
Block 203A, Henderson Road
#07-03, Henderson Industrial Park
SG-159546 Singapore
Phone +65 6275 12 11
Fax +65 6275 12 33
www.kaba.com.sg

SERTEC s.r.l.
Via Lombardia, 7/8
IT-37012 Bussolengo (VR)
Phone +39 045 7158987
Fax +39 045 7151158
www.sertecsr.it

IDIPS
13, Avenue Gabriel
FR-78170 La Celle Saint-Cloud
Phone +33 (0) 1 39 18 12 12
Fax +33 (0) 1 39 18 00 08



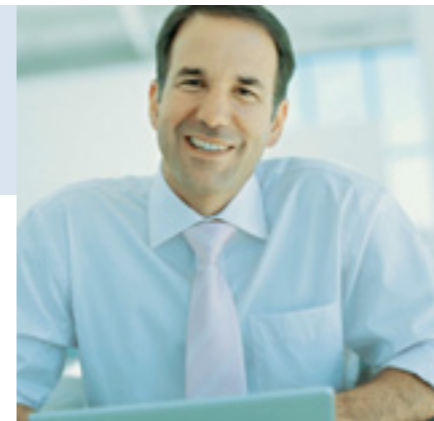
Highest reliability – simple operation

With the compact e-B@x, the lock can be connected to a TCP/IP network. Axessor® is the ideal safe lock for organisations with large branch networks, such as banks, post offices, retail and restaurant chains.

- Banks
- Post office branches
- Retail chains
- Restaurant chains
- Cash-in-Transit

All-in One Flexibility and Versatility

Axessor® is a modular safe lock, which can be networked or used as a stand-alone unit. It can be used wherever organisational flexibility, fast response and increased security are required. Axessor® is part of the successful SL 525 and Questor® family, containing many of the same traits, namely, maximum reliability, ease of use and high performance functionality. The motorised lock with automatic locking mechanism offers the ultimate in lock security plus flexible installation.



Banks and Post Offices

Security managers at banks require onhand information of the safe locks in their organisation at all times. Auditing and programming in real time are frequent requirements. With the remote access function in Axessor®, users can discretely perform tasks like reading out the audit or checking the lock status from a central location. Of course, data communications are handled with maximum security, the Advanced Encryption Standard AES-256.



Restaurant Chains

Staff turnover in chain restaurants is high, making the task of managing user codes time consuming. The Axessor® can record up to 40 user codes and can be accessed remotely to delete codes or record new users easily and efficiently.



Retail Chains

Retail chains constantly adjust their opening times to meet the needs of regional and local customers. The adjustment of time lock periods is labor intensive and time consuming. Fast response time is crucial within retail sales. Axessor® allows special opening hours to be programmed without any alteration of the standard settings. If someone forgets to reset the time lock, the security manager can use the remote programming function to reset without leaving the office.

Short Response Time for High Efficiency

Axessor® locks can be centrally monitored and settings can be adjusted quickly to new operational requirements. Travel and administrative costs are therefore reduced whilst productivity of security staff is increased and control over the safe locks improved.



Proven Quality – Maximum Reliability

Quality pays in high reliability and low maintenance costs; metal housing, durable keys and a highly legible display featuring understandable information makes Axessor® easy to operate.

e-B@x

The e-B@x is compact and flexible in terms of mounting, it handles the data communication and encryption within the network. The e-B@x is connected to a LAN or WAN with a standard RJ-45 jack. Each e-B@x unit provides an additional five inputs and five outputs. The lock is connected to an external 12V power supply via the e-B@x.

Motorised Lock

The patented motorised lock with automatic locking provides maximum security. It can be integrated into existing locking systems using the standard footprint. This product is constructed to ensure maximum security against impact and electromagnetic disruptions. The input unit and lock are connected via a cable instead of a fixed spindle. Unlimited mounting position can be selected and its position can not be determined from the outside.

The reliable hardware makes the system highly practical and useful. With the flexible, easy to configure software, the system can be optimally adapted to individual security requirements. The powerful electronics monitor the system status comprehensively, allowing fast intervention to ensure maximum security.

Proven Versatility

Axessor® is another innovative member of the SL 525 and Questor® family, of which thousands are already successfully in operation. Axessor® is one of the most powerful and reliable lock systems on the market. The sturdy metal housing meets the highest quality standards and the individually configurable functions can be adapted to meet new organisational requirements, which means your investment is secure, today and in the future.

Programmable Independent of Time and Place

Lock settings are changed by authorised individuals at a central location with a programming software independent of time and place. This saves travel expenses and cuts down on administrative work. Maximum system security is assured with a multi-stage security approach involving security dongles, passwords, access codes and encrypted data transmission.

Modular and Flexible

Axessor® can be operated as a stand-alone unit or as a networked lock. An external power supply eliminates the need for battery changes, and the many programmable inputs and outputs allow flexible integration in alarm systems plus extensive system monitoring. With the optional e-B@x, the lock can be integrated into a network. The modular design allows customers to build the systems gradually and spread within budgets.



Axessor® Input Unit

The neatly arranged and clearly marked keypad allows the codes to be entered quickly and reliably in day-to-day operations. The menu can be switched to different languages and is self-explanatory, thus reducing the error rate and increasing operational reliability.

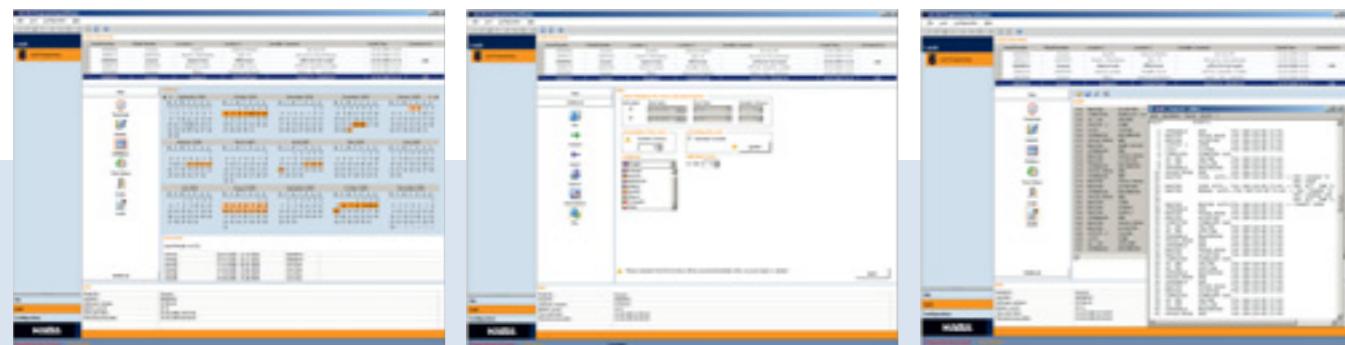
Menu settings can be changed in one of three ways: 1. on site through the keypad, 2. with a PC via a USB connection to the input unit or 3. remote access through a network. Thus giving the security manager greater flexibility and increasing overall efficiency. The powerful configuration menu is highly flexible and

allows users to program a number of functions individually. For instance, to customise the display of time delay, to select the access rights of masters, managers and users or to preprogram various time lock features.

- 1 Axessor® input unit for simple, secure and convenient operations
- 2 e-B@x for secure data communications and data encryption in the network
- 3 Patented motorised lock with automatic locking for maximum lock security
- 4 Multi-lingual display with understandable information and clear-cut symbols

User Friendly Software – Great Flexibility

The powerful software can manage a large number of locks efficiently. Authorised security managers can adjust the configuration of the Axessor® and delete or add users.



AS 280 Installation Software

The installation software is used for configuring the necessary network settings in Axessor®, e.g. the IP address, the port, or whether a DHCP server manages the address. Configuration is carried out on the lock. The installation software is protected by a USB security dongle and a password. Every action is recorded in a log file.

AS 284 Programming Software

A clear separation of installation software from programming software ensures a high level of security. Software is easy to use and allows parameter setting via LAN or the USB interface for the locks connected to the system.

With the clearly arranged lock list, individual locks can be found quickly by serial number or by customer-specified designation. All menu settings can thus be reprogrammed remotely, e.g. delete or add code, weekly time locks, vacation, access rights and delay times.

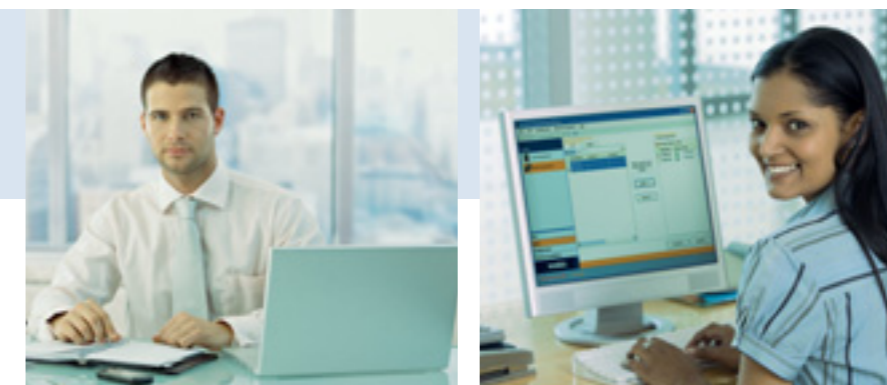
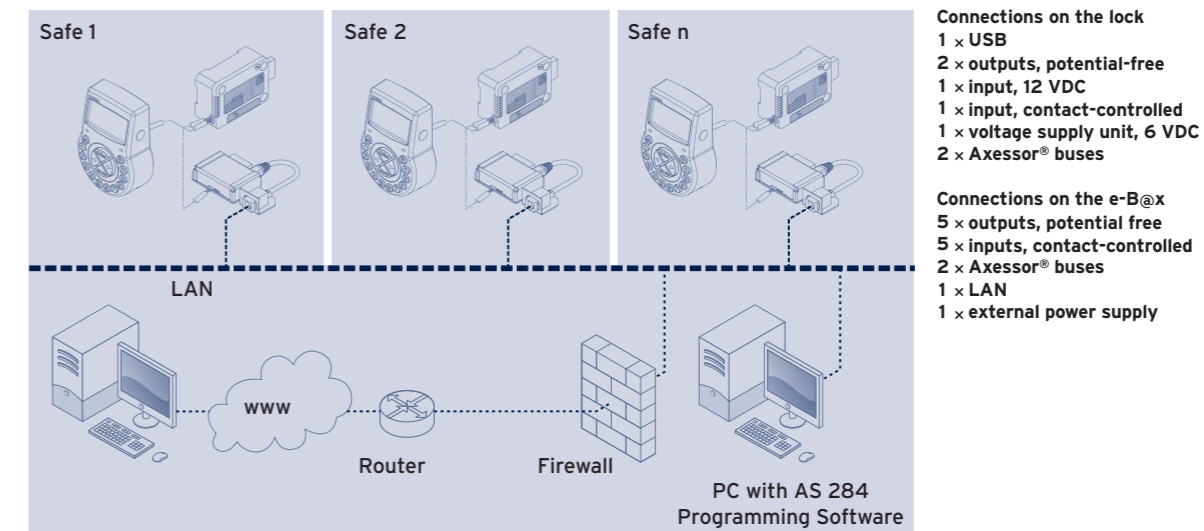
AS 283 SDK Software Development Package

The software development package contains all functions a programmer needs in using Axessor® to generate an encrypted communication via LAN or USB and to alter all possible lock parameters. It therefore takes little programming effort to integrate the Axessor® locks into customer-specific software applications. The software interface is available as a .Net function library and thus ideal for .Net developers.

AS 286 Audit Viewer

A large event memory with 4,800 audits allows the master or manager to analyse lock actions in the past. Data is read out on-site, via direct USB connection to the lock or, unnoticed, via a LAN connection from an external location.

Network Integration



The Axessor® lock fits ideally into an already existing LAN structure and can be operated concurrently with other equipment in the network. With the optional e-B@x, locks operated on a stand-alone basis can be linked into networks at a later date. The programming software can be run simultaneously on several computers within the network to achieve maximum flexibility.

Integration into an existing network
 The Axessor® locks are configurable for use with various network topologies. That means Axessor® locks can be operated in a network controlled by a DHCP server. Fixed IP addresses can also be used to identify the Axessor® locks within the network. Other common techniques such as DNS and port forwarding are also supported. Therefore Axessor® safelocks can be managed centrally in LAN or WAN networks through the AS284 programming software or through a customer-specific application, achieved with the AS283-SDK.

Integrated security
 Access rights to different locks are controlled using a unique key assigned to each customer. This customer key is stored on a password protected dongle. The data transmission on the network is secured by the AES-256 encryption algorithm. Opening codes are never stored in the software and thus never transmitted via the LAN. The concept guarantees that hundreds of Axessor® safelocks can be programmed via the LAN on a secure network and also globally.